





# Layers Exercise

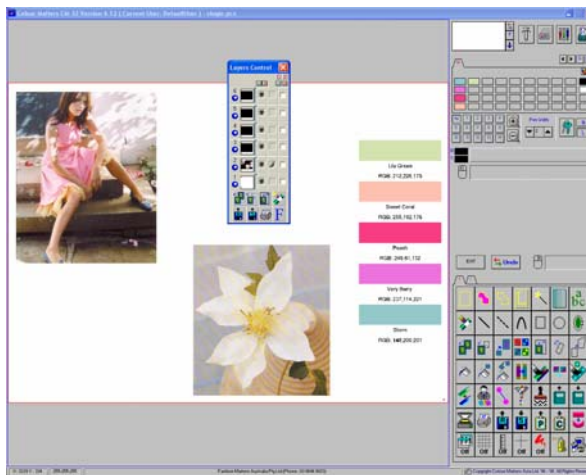
Note: When working with Layers, make sure you organise all your images separately. The Images need to be saved in a separate folder. This will help you place all your images onto your storyboard quickly.

1. Activate the 1<sup>st</sup> Layer by clicking the  icon on the 1<sup>st</sup> Layer like so:   
Try to not place too much on this Layer at the start as it will be used as the background to your image.

2. Pick the colour of your background. Usually it's white to begin with.

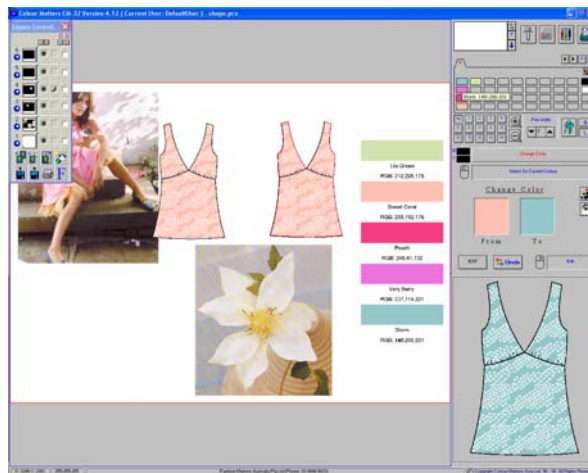
3. Activate the 2<sup>nd</sup> Layer again by clicking the  icon on the 2<sup>nd</sup> Layer.

4. Read in the scanned photo images and the colour chips image. Using the “Extract Colour” tool  place each colour on the Colour Card as illustrated in the image below.



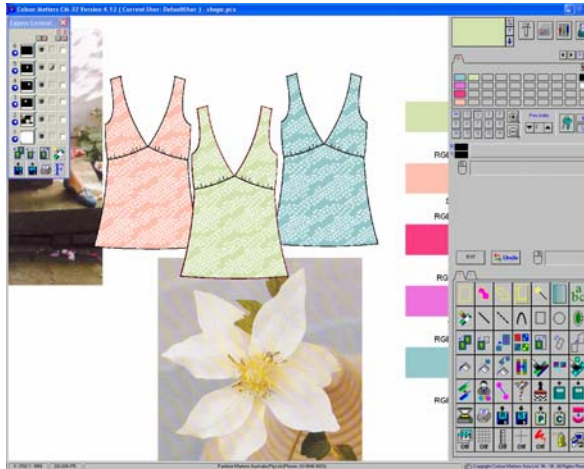
5. Activate the 3<sup>rd</sup> Layer and bring in the “A-line” top sketch.

6. Activate the 4<sup>th</sup> Layer and bring in a second copy of the “A-line” top sketch.

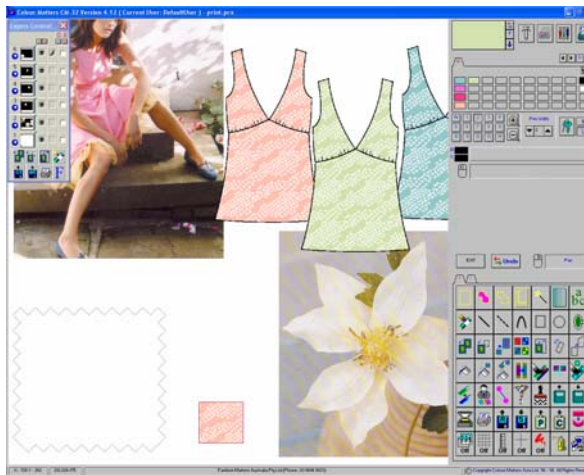


7. Change the colour of one “A-line” sketch using the colour card you created previously.


8. Activate the 5<sup>th</sup> Layer and bring in the same “A-line” sketch. Place the image between the other 2 sketches. Now change the colour again using the colour card you created previously, picking a new colour.




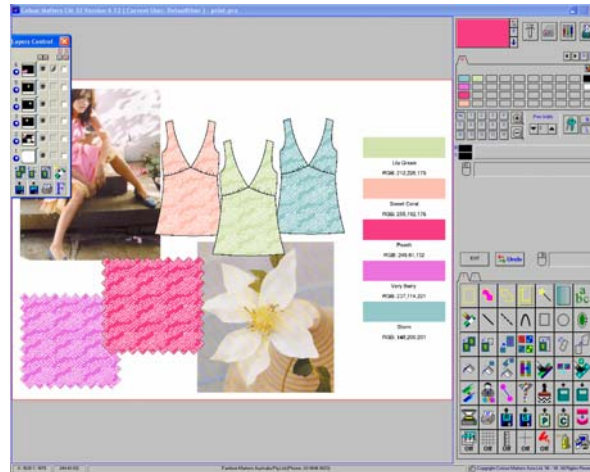
9. Activate the 6<sup>th</sup> Layer and read in the Fabric Swatch image.




10. Place the Fabric Swatch image in the bottom left-hand corner of the Drawing Area. Read in the Print Design and place it somewhere close to the Fabric Swatch image (see picture above).



11. Click the Pattern Fill tool  and fill-in the Fabric Swatch with the Print.



12. Auto Frame  the Fabric Swatch and change the colour of the Print using colours from the colour card.

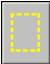



13. Copy the Fabric Swatch  and place it next to the other one.

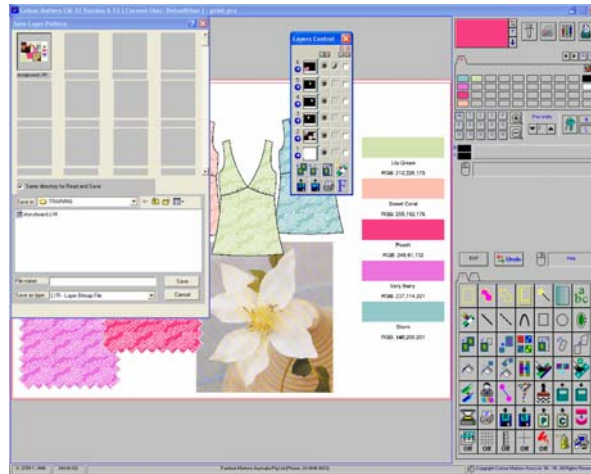
14. Change the colour of the second Fabric Swatch using the remaining colour from the colour card.


15. Now “Read”  in the Jigsaw logo . Activate Layer 1 and then and place it on the middle or bottom right-hand corner of Layer 1.

16. Once you’re happy with the placement of all the images, go to Layer 1 and type in a title for the Storyboard. Click the text tool  +  and then pick the Font and Size you wish to use. In this case pick 80 point type and Georgia as the Font. Type in “Spring 2008” (or whatever you wish) at the top right hand corner of the page.

17. Frame the entire Drawing Area  +  and “Save” the image. The 6 layered image will be saved as a .LYR image and will only be able to be opened in CM’s Layers mode.

Saving as a Layered Image means you can now use this as a template for future Storyboards. Just call this image up and change the existing images, prints, sketches etc as required.



18. To save as any other file type, after framing the entire Drawing Area, click the “Flatten Layers” icon  This will close out of the Layers Mode and place the *flattened* image onto the normal Drawing Area ready for the image to be saved as your preferred file type.